

**MANUFACTURING PRODUCTION, AUSTRALIA
OCTOBER 1994, PRELIMINARY**

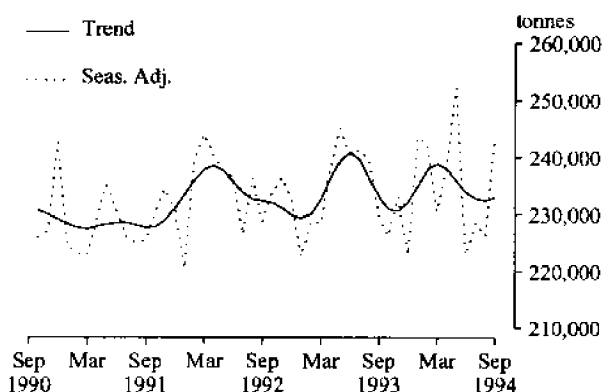
NOTES

This publication presents preliminary monthly estimates for selected major indicators of manufacturing production for Australia. The statistics are collected from all the relevant manufacturing establishments other than single establishment manufacturing enterprises with fewer than four persons employed and are part of a much broader range of items published quarterly. For details of these see "Related publications" in the Explanatory Notes at the back of this publication. The series for sulphuric acid production has become confidential and is deleted.

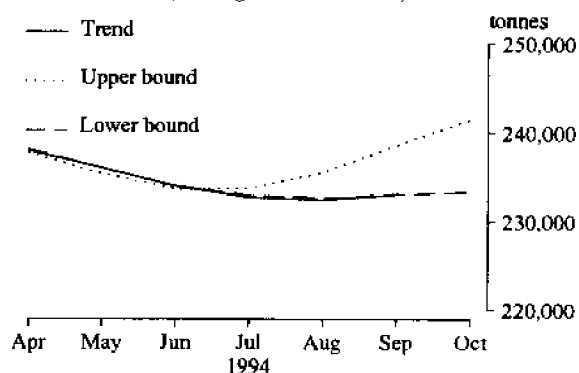
RICHARD MADDEN
Acting Australian Statistician

PRODUCTION STATISTICS, AUSTRALIA : LONGER TERM TRENDS AND SHORT TERM SENSITIVITY ANALYSIS

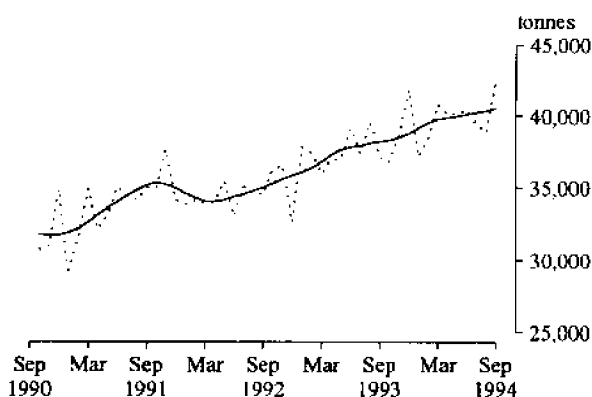
M1. RED MEAT(a)



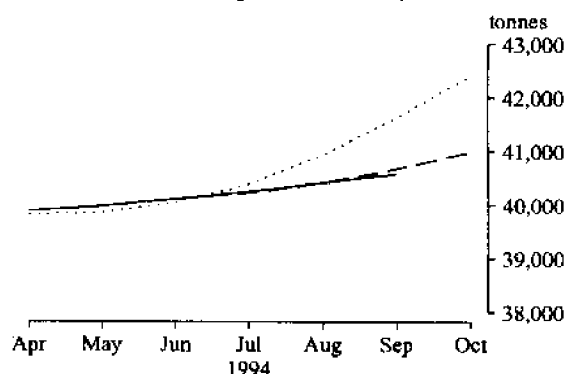
M1. RED MEAT
(Average movement 4%)



M2. CHICKEN MEAT(b)



M2. CHICKEN MEAT
(Average movement 4%)

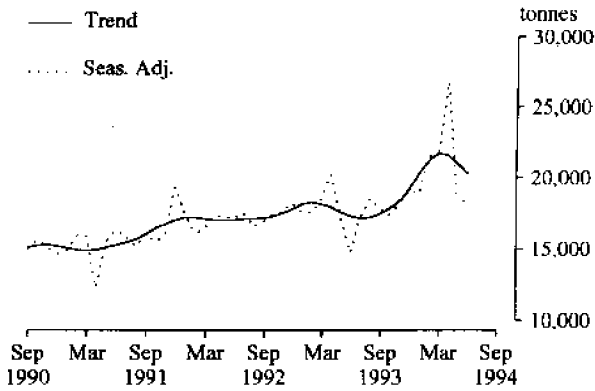


For footnotes see end of tables.

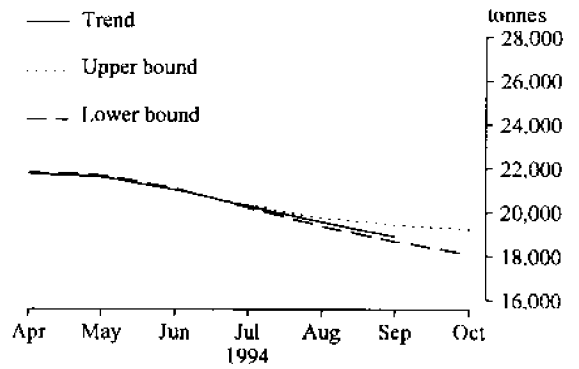
INQUIRIES

. for further information about statistics in this publication and the availability of related unpublished statistics, contact Rod Smith on Melbourne (03) 615 7635 or any ABS office.
. for information about other ABS statistics and services please refer to the back page of this publication.

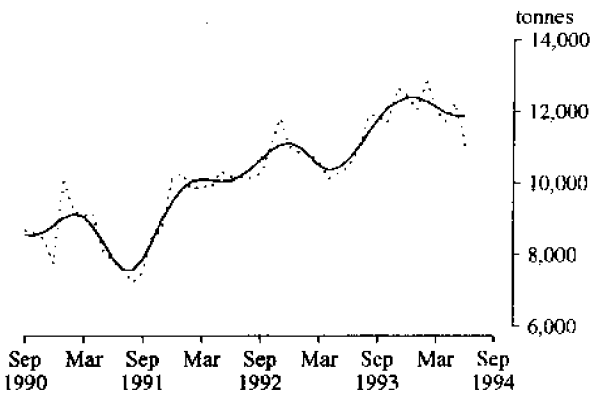
M3. CHEESE



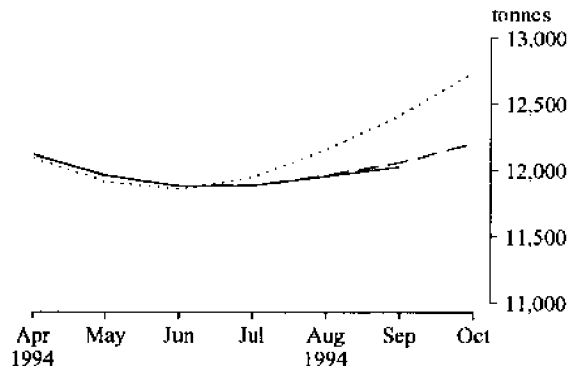
M3. CHEESE
(Average movement 7%)



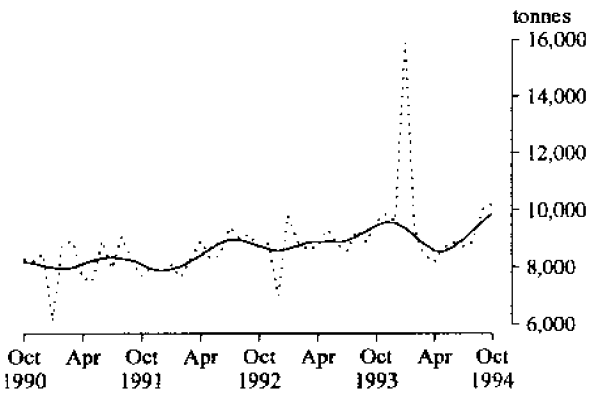
M4. BUTTER



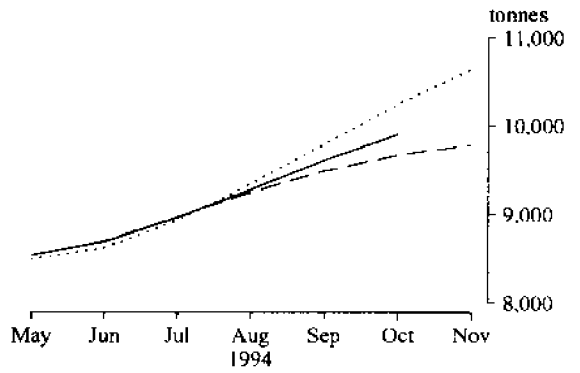
M4. BUTTER
(Average movement 5%)



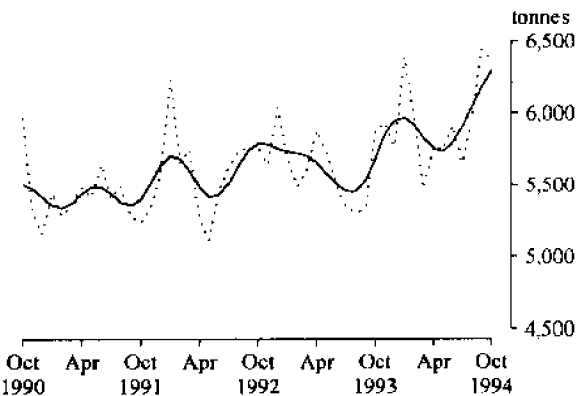
M5. CHOCOLATE BASE CONFECTIONERY



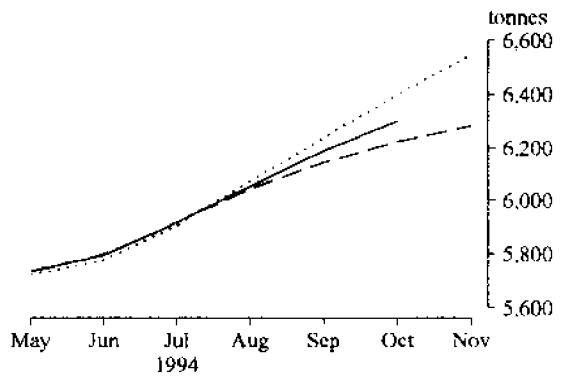
M5. CHOCOLATE BASE CONFECTIONERY
(Average movement 7%)



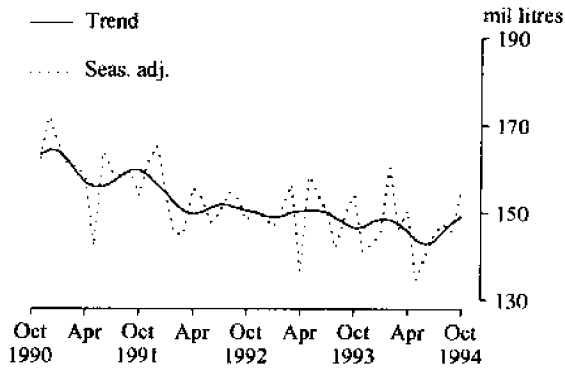
M6. OTHER CONFECTIONERY



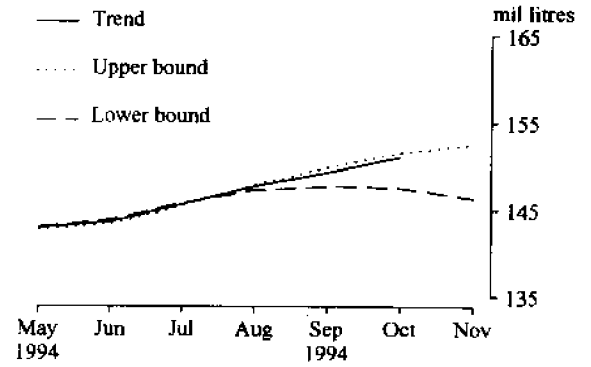
M6. OTHER CONFECTIONERY
(Average movement 5%)



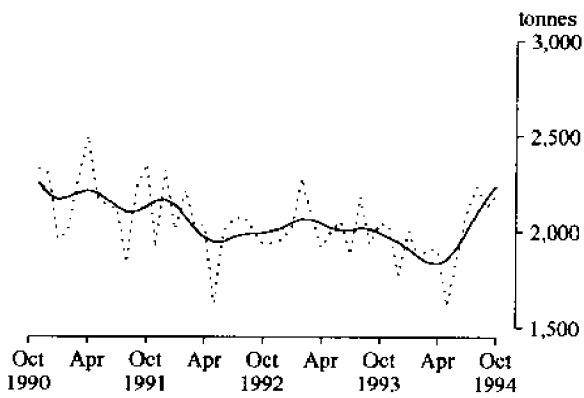
M7. BEER(d)



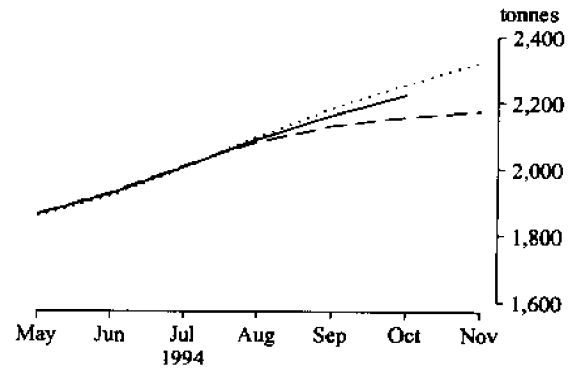
**M7. BEER
(Average movement 5%)**



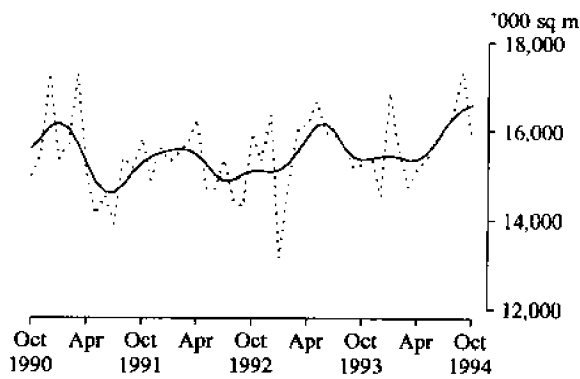
M8. TOBACCO AND CIGARETTES(e)



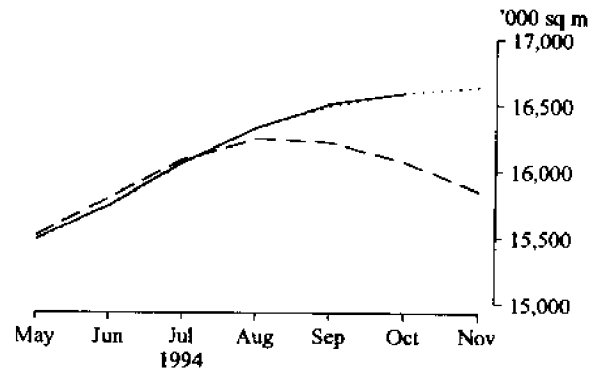
**M8. TOBACCO AND CIGARETTES
(Average movement 8%)**



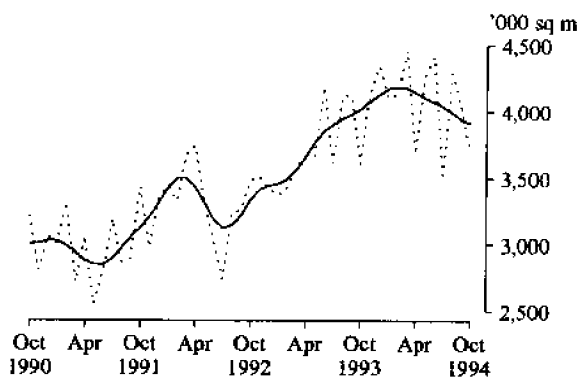
M9. MAN-MADE FIBRE WOVEN FABRIC



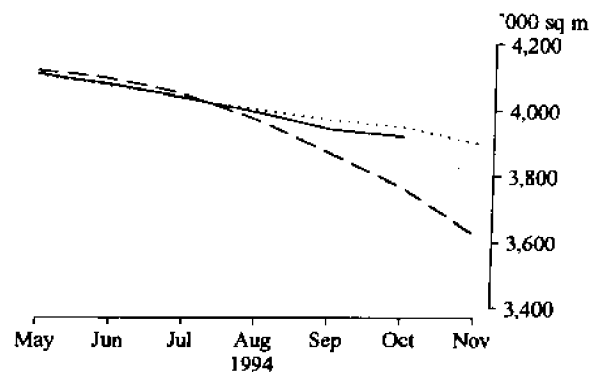
**M9. MAN-MADE FIBRE WOVEN FABRIC
(Average movement 6%)**



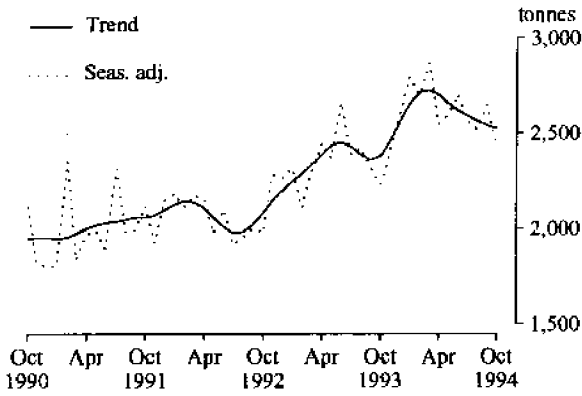
M10. COTTON WOVEN FABRIC(f)



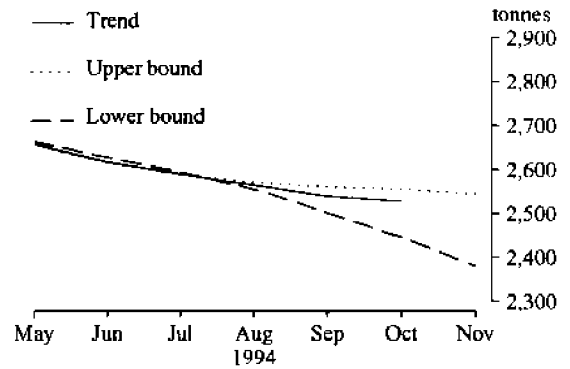
**M10. COTTON WOVEN FABRIC
(Average movement 9%)**



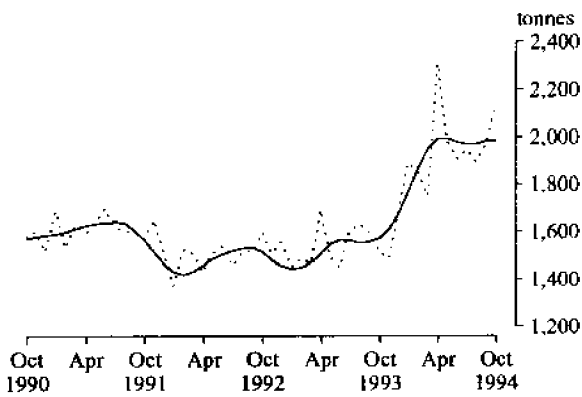
M11. COTTON YARN(f)



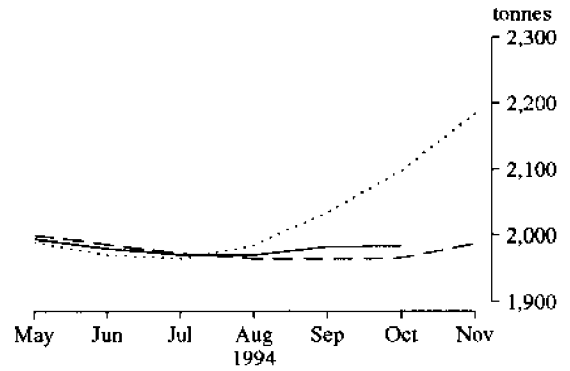
**M11. COTTON YARN
(Average movement 8%)**



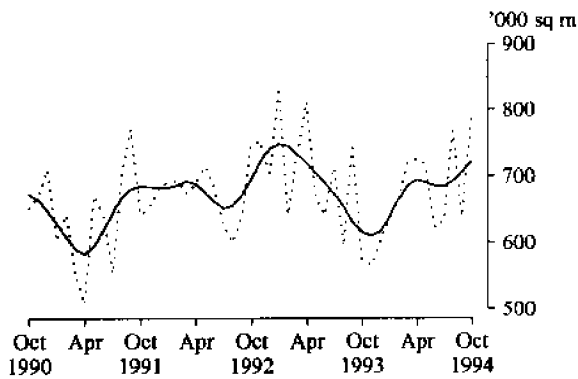
M12. WOOL YARN(f)



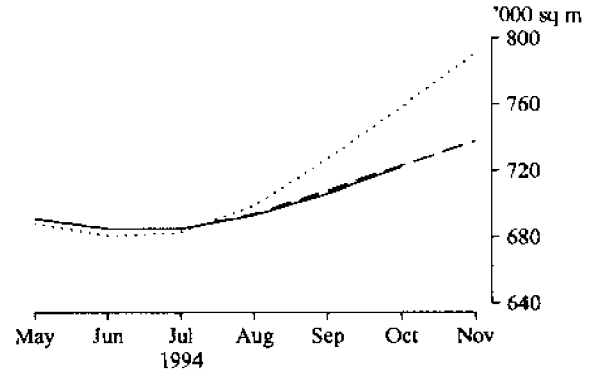
**M12. WOOL YARN
(Average movement 6%)**



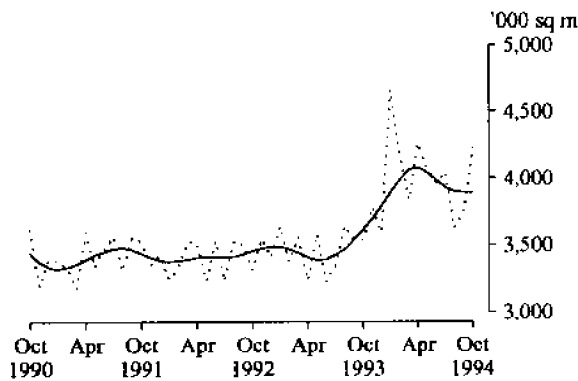
M13. WOOL WOVEN FABRIC(f)



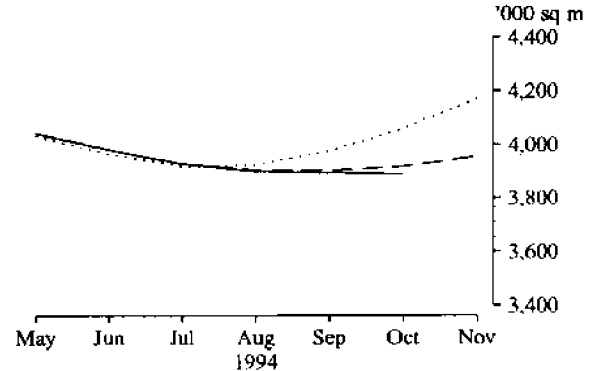
**M13. WOOL WOVEN FABRIC
(Average movement 8%)**



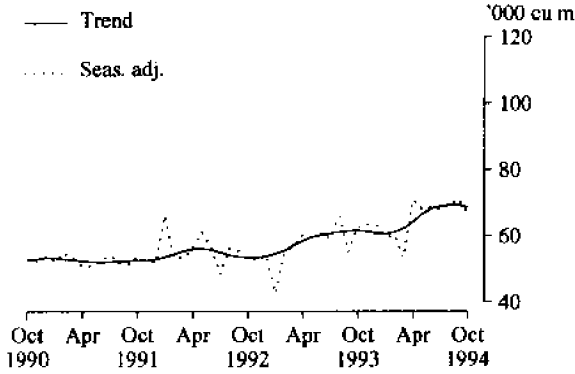
M14. TEXTILE FLOOR COVERINGS



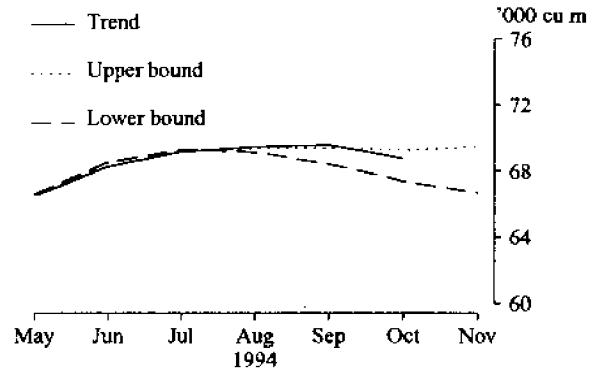
**M14. TEXTILE FLOOR COVERINGS
(Average movement 6%)**



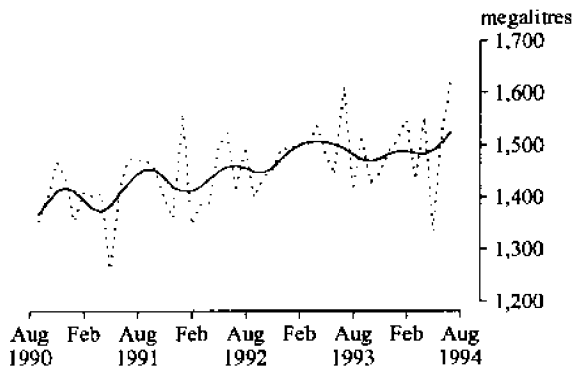
M15. UNLAMINATED PARTICLE BOARD(g)



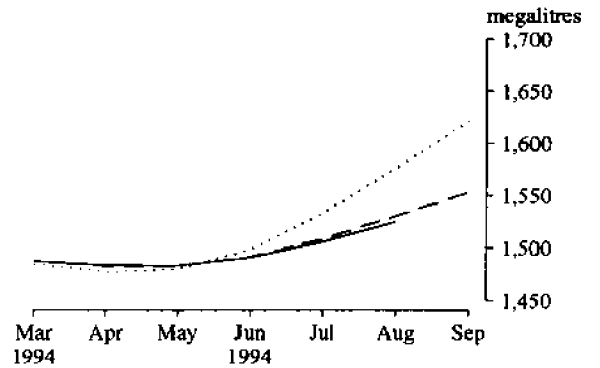
**M15. UNLAMINATED PARTICLE BOARD
(Average movement 5%)**



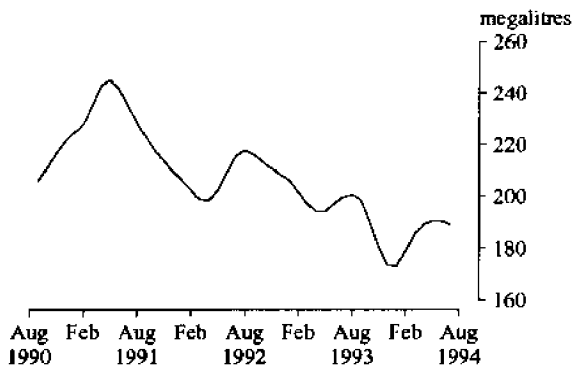
M16. AUTOMOTIVE GASOLINE(b)



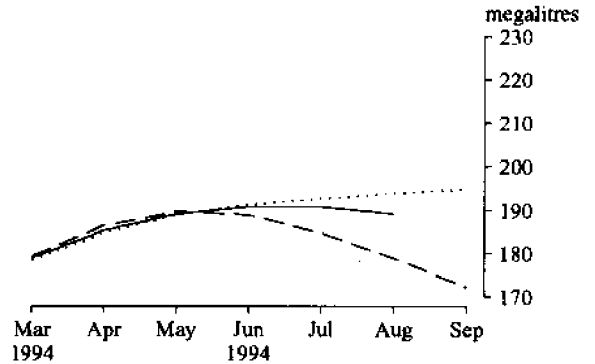
**M16. AUTOMOTIVE GASOLINE
(Average movement 5%)**



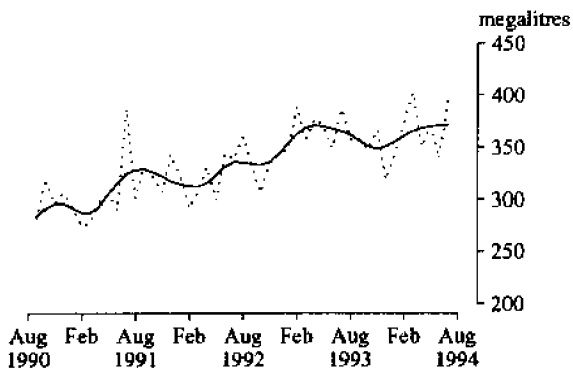
M17. FUEL OIL



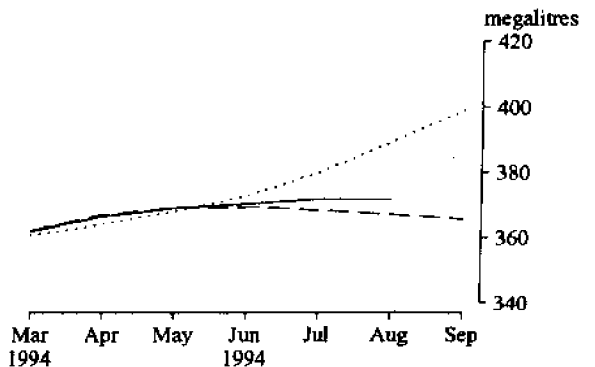
**M17. FUEL OIL
(Average movement 17%)**



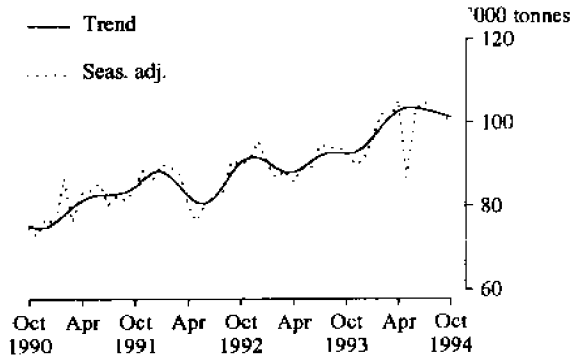
M18. AVIATION TURBINE FUEL(h)



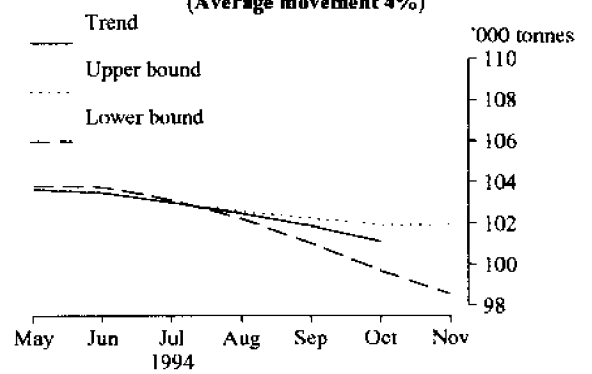
**M18. AVIATION TURBINE FUEL
(Average movement 10%)**



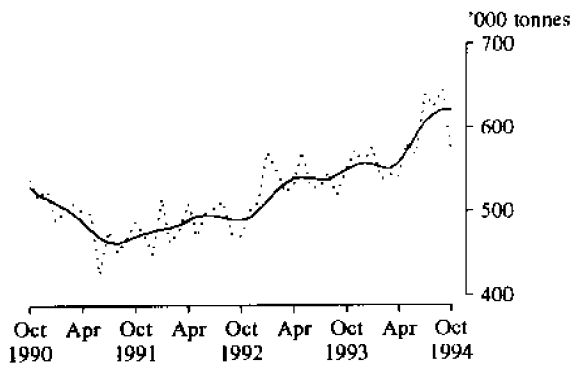
M19. PLASTICS IN PRIMARY FORMS(i)



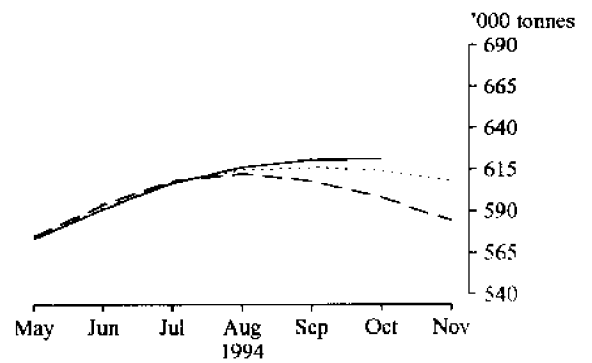
**M19. PLASTICS IN PRIMARY FORMS
(Average movement 4%)**



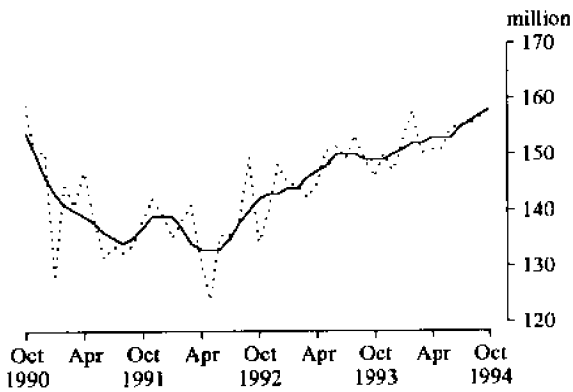
M20. PORTLAND CEMENT



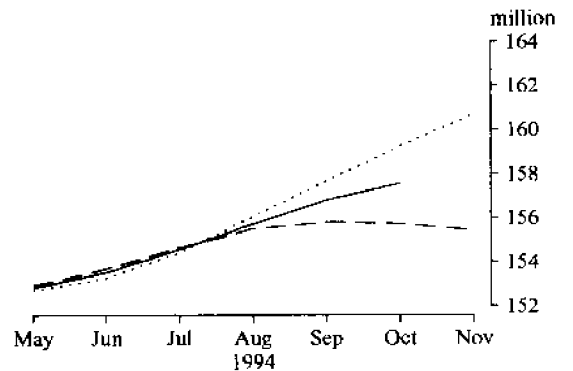
**M20. PORTLAND CEMENT
(Average movement 5%)**



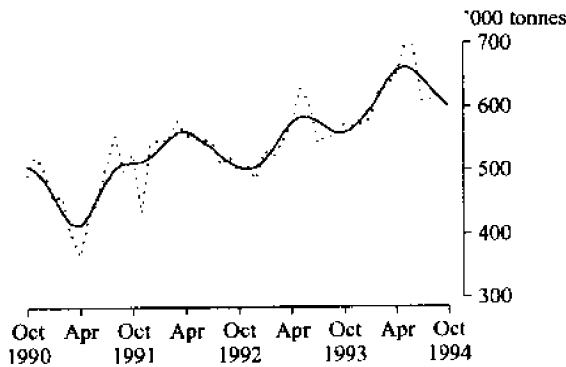
M21. CLAY BRICKS



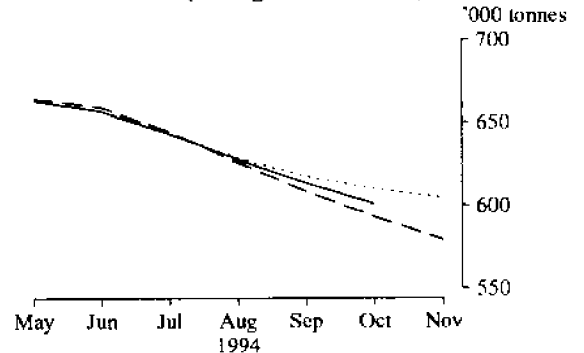
**M21. CLAY BRICKS
(Average movement 4%)**



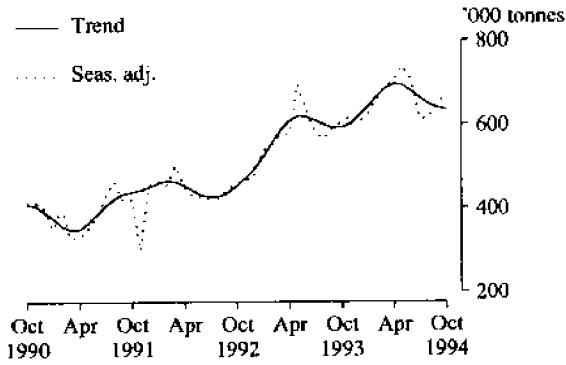
**M22. BASIC IRON, SPIEGELEISEN
AND SPONGE IRON**



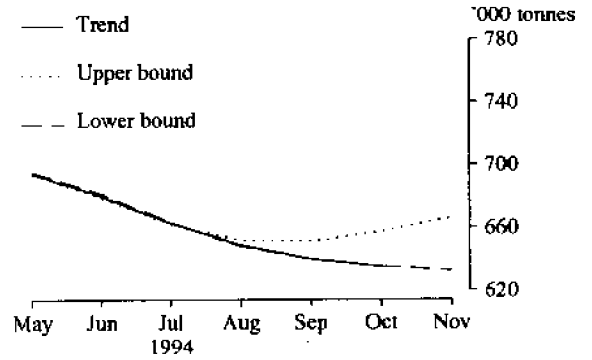
**M22. BASIC IRON, SPIEGELEISEN
AND SPONGE IRON
(Average movement 5%)**



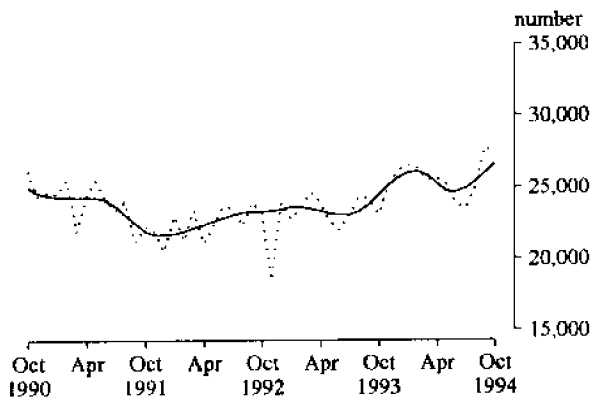
M23. BLOOMS AND SLABS



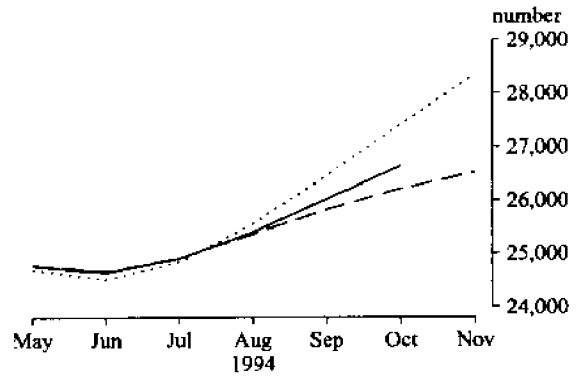
M23. BLOOMS AND SLABS
(Average movement 6%)



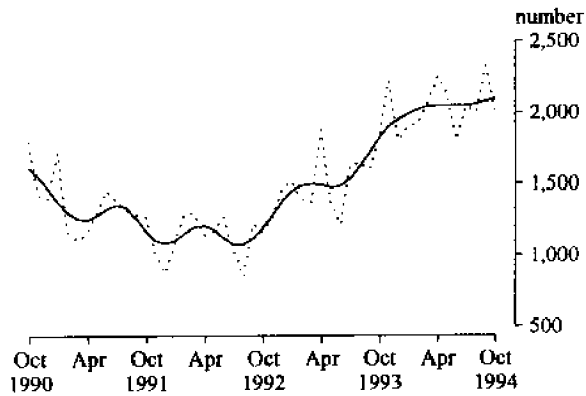
M24. CARS AND STATION WAGONS



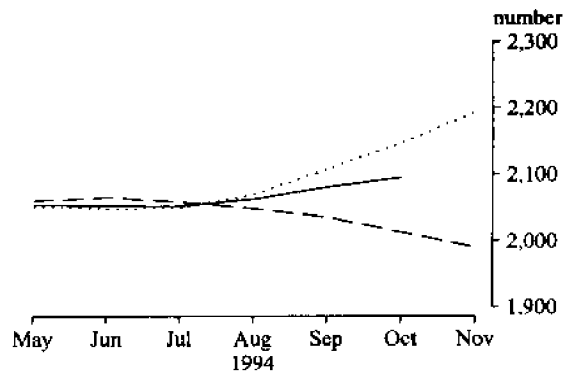
M24. CARS AND STATION WAGONS
(Average movement 8%)



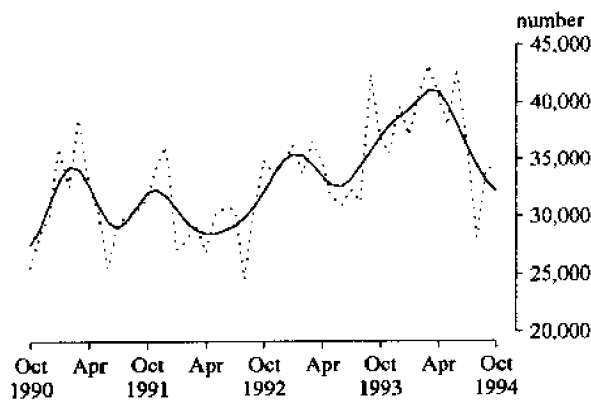
M25. VEHICLES FOR GOODS AND MATERIALS(k)



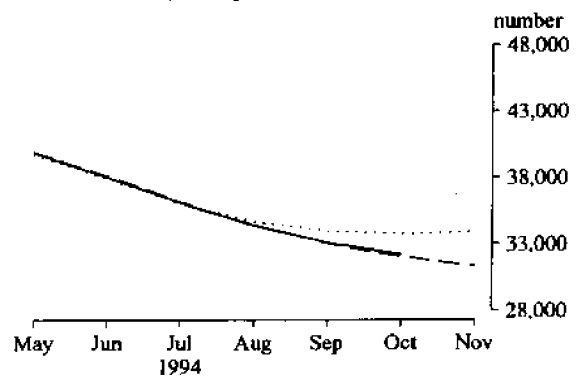
M25. VEHICLES FOR GOODS AND MATERIALS
(Average movement 12%)



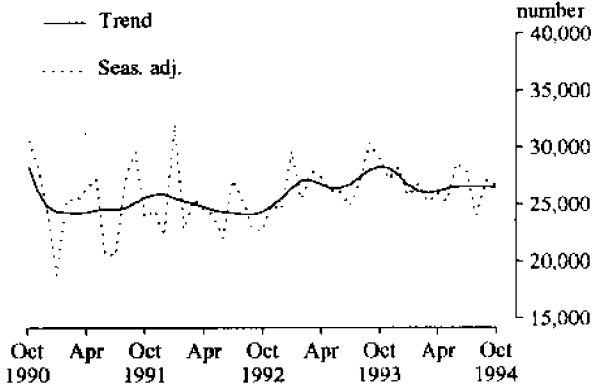
M26. REFRIGERATORS, DOMESTIC



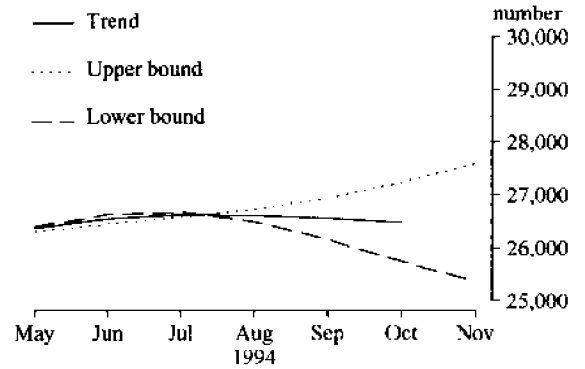
M26. REFRIGERATORS, DOMESTIC
(Average movement 9%)



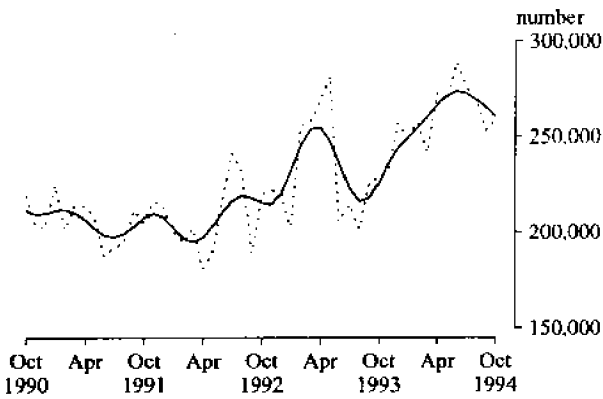
M27. CLOTHES WASHING MACHINES, DOMESTIC



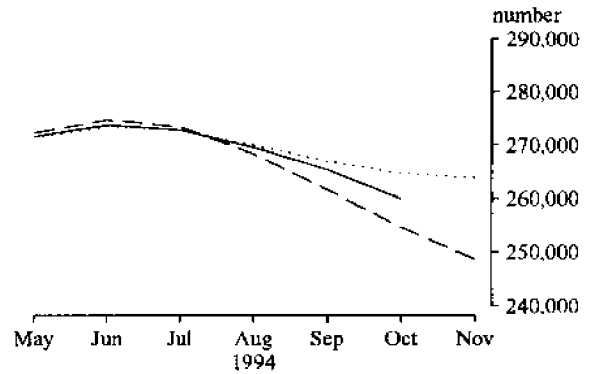
M27. CLOTHES WASHING MACHINES, DOMESTIC
(Average movement 10%)



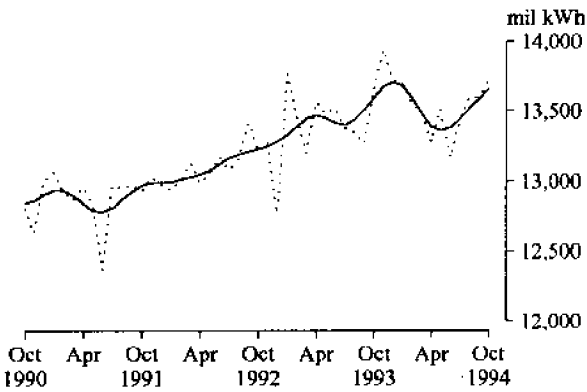
M28. ELECTRIC MOTORS



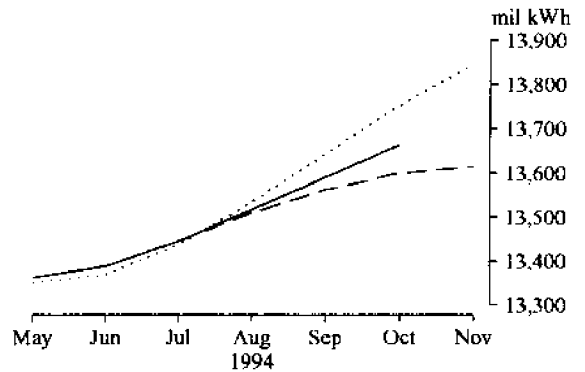
M28. ELECTRIC MOTORS
(Average movement 7%)



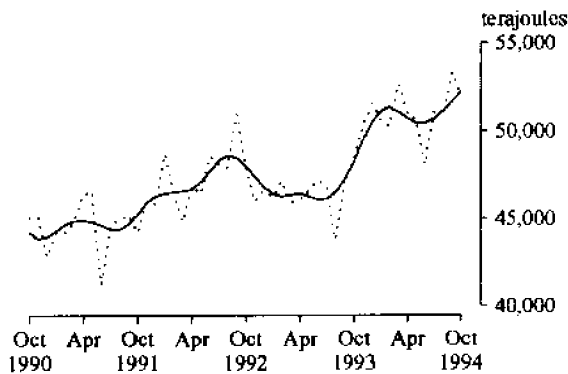
M29. ELECTRICITY



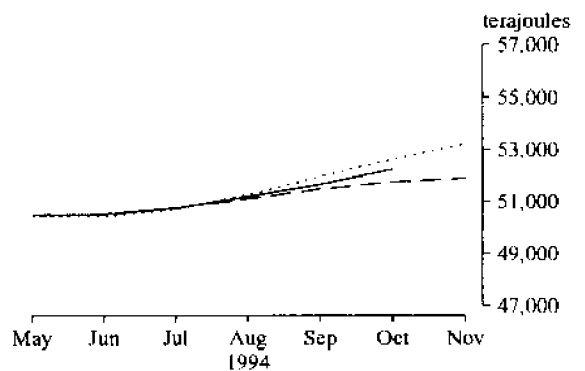
M29. ELECTRICITY
(Average movement 1%)

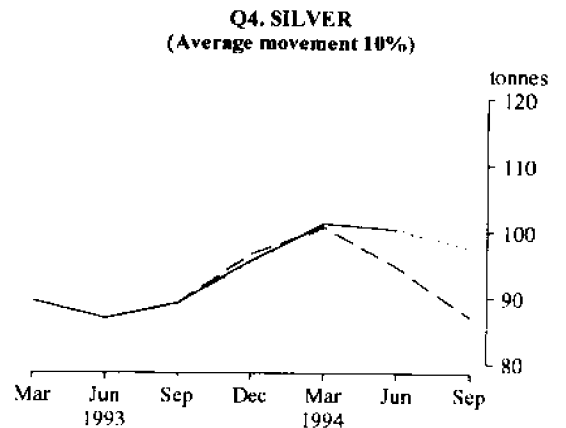
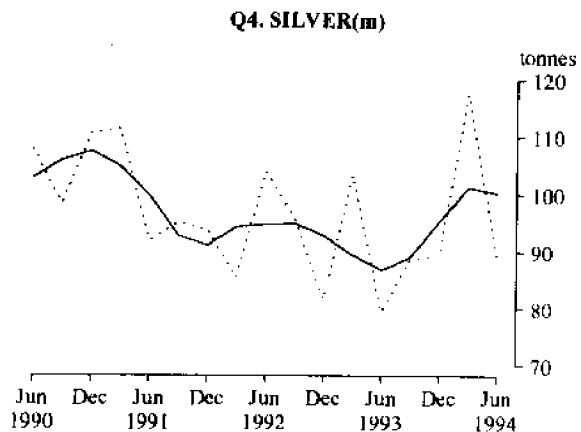
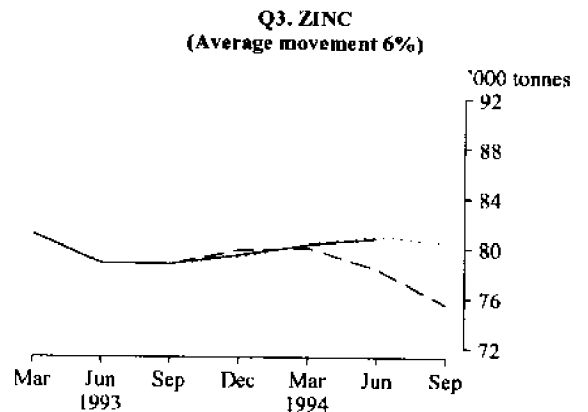
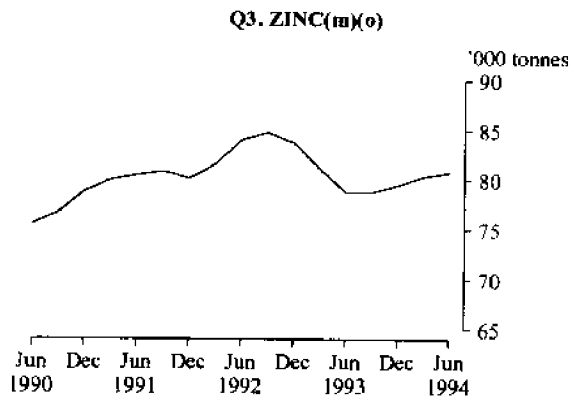
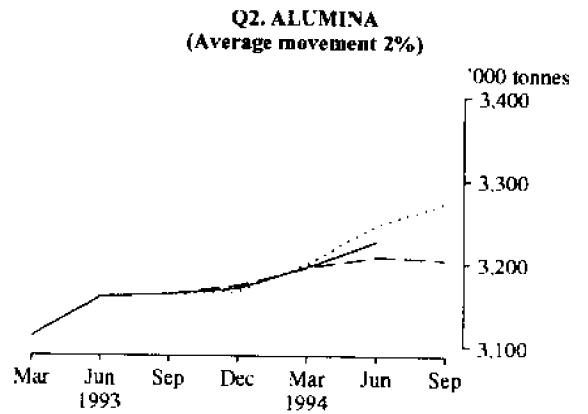
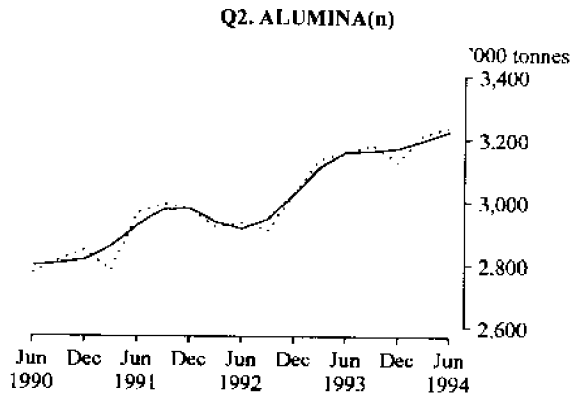
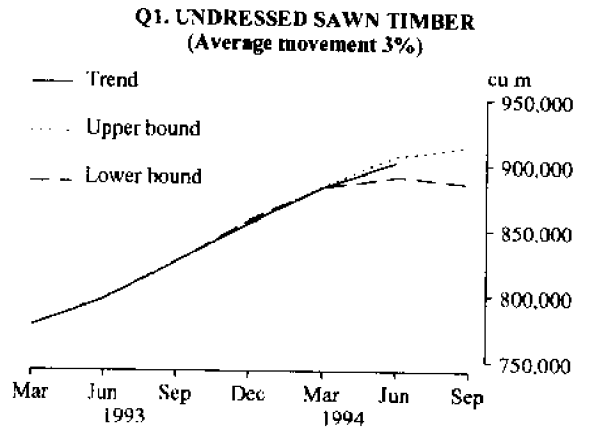
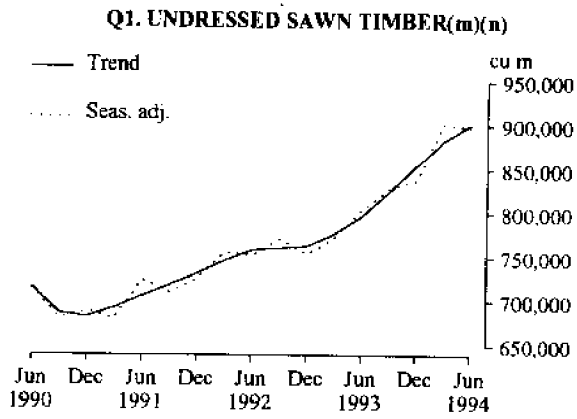


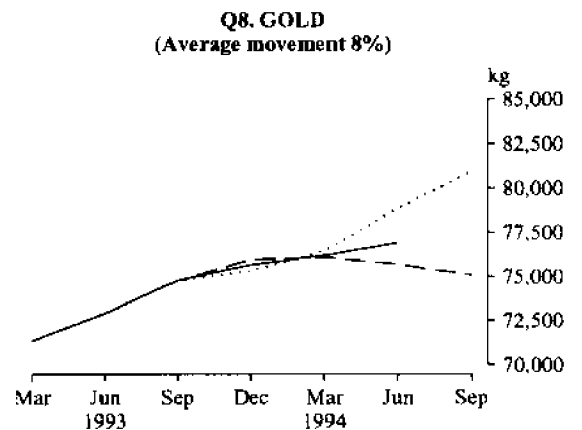
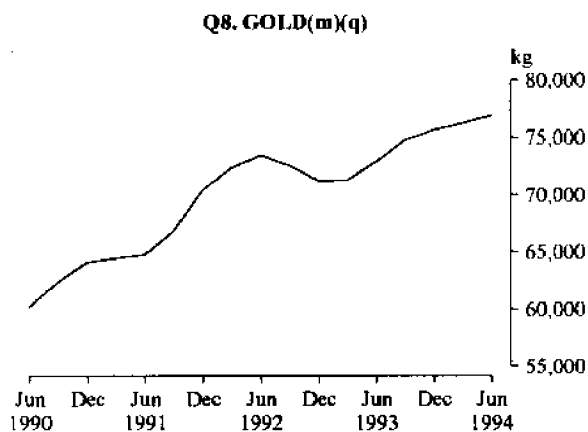
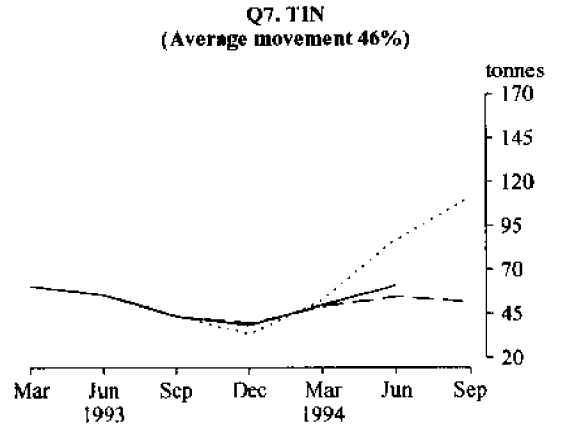
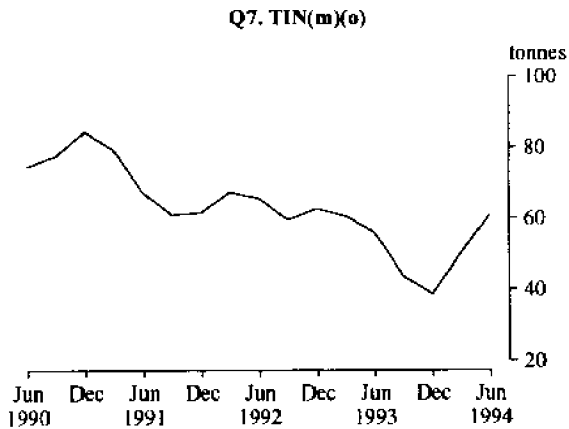
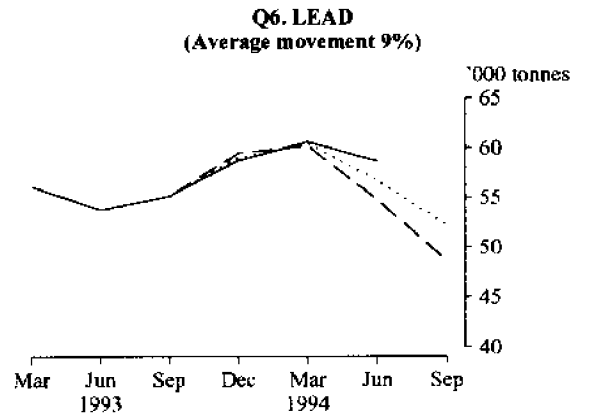
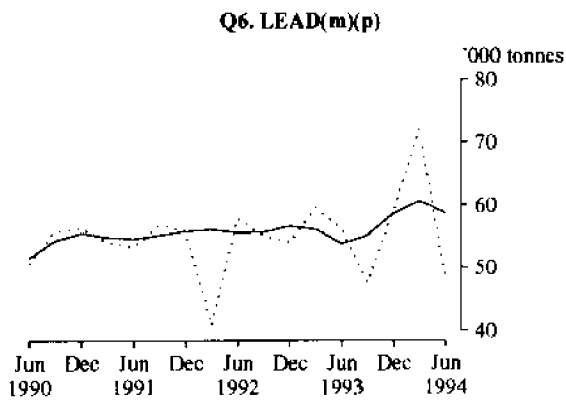
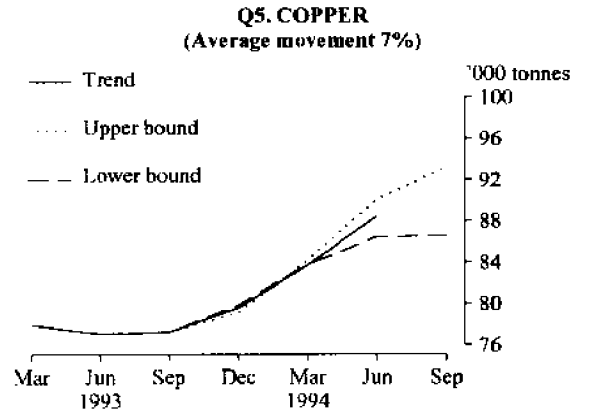
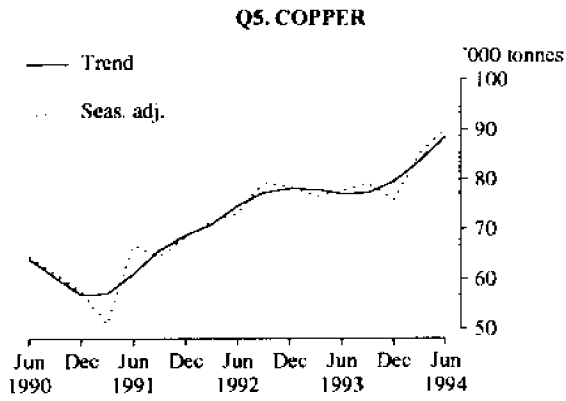
M30. GAS(I)



M30. GAS
(Average movement 3%)







PRODUCTION STATISTICS, AUSTRALIA, OCTOBER 1994, PRELIMINARY

No. Item	Series	Unit	1994									Percentage changes between latest month shown and-	
			Feb.	Mar.	Apr.	May	June	July	Aug.	Sept.	Oct.	prev. month	same month prev. year
M1. Red meat(a)	Orig.	tonnes	233,570	252,414	226,398	254,836	223,595	218,342	235,055	255,116	n.y.a.	8.5	3.8
	S. adj. r	"	242,443	230,464	238,612	252,291	222,876	228,632	226,259	243,862	n.y.a.	7.8	6.1
	Trend r	"	237,899	238,191	236,646	234,389	232,484	231,616	231,687	232,714	n.y.a.	0.4	-0.3
M2. Chicken meat(b)	Orig.	"	36,613	41,323	41,301	39,063	42,313	41,225	36,353	40,682	n.y.a.	11.9	12.3
	S. adj.	"	38,497	40,846	40,134	40,186	40,445	39,473	38,888	42,660	n.y.a.	9.7	15.0
	Trend r	"	39,561	39,800	39,883	39,977	40,120	40,245	40,408	40,569	n.y.a.	0.4	6.2
M3. Cheese(c)	Orig.	"	18,186	19,834	18,171	16,283	8,995	11,009	16,386	24,954	n.y.a.	52.3	6.7
	S. adj.	"	18,831	21,470	21,841	26,748	18,094	18,528	19,719	19,323	n.y.a.	-2.0	4.4
	Trend r	"	20,264	21,232	21,713	21,570	20,992	20,252	19,559	18,867	n.y.a.	3.5	0.0
M4. Butter(c)	Orig.	"	11,755	12,158	9,103	6,917	7,200	5,420	8,343	14,719	n.y.a.	76.4	5.8
	S. adj.	"	12,037	12,820	12,010	11,714	12,242	11,051	12,008	12,731	n.y.a.	6.0	7.0
	Trend r	"	12,384	12,278	12,114	11,957	11,882	11,886	11,952	12,029	n.y.a.	0.6	5.5
M5. Chocolate base confectionery	Orig.	"	9,405	9,561	7,419	8,758	9,277	8,840	r 10,725	r 10,527	10,582	0.5	2.0
	S. adj.	"	9,362	8,409	8,203	8,685	8,856	8,712	r 8,900	r 10,020	10,218	2.0	6.4
	Trend r	"	9,070	8,781	8,568	8,538	8,689	8,960	9,278	9,606	9,904	3.1	4.7
M6. Other confectionery	Orig.	"	5,583	5,825	4,705	5,717	6,283	6,014	r 7,296	r 7,283	6,638	8.9	6.8
	S. adj.	"	5,981	5,477	5,771	5,743	5,914	5,657	r 5,975	r 6,442	6,369	-1.1	8.0
	Trend r	"	5,919	5,827	5,750	5,736	5,795	5,915	6,052	6,190	6,299	1.8	10.6
M7. Beer(d)	Orig.	mil litres	134	164	126	131	125	127	143	143	159	11.3	5.7
	S. adj.	"	146	151	134	140	145	147	146	155	147	5.5	3.9
	Trend r	"	147	146	144	143	144	146	148	149	151	1.2	3.1
M8. Tobacco and cigarettes(e)	Orig.	tonnes	2,070	2,240	1,382	2,164	2,171	2,419	2,395	2,186	2,049	-6.3	13.2
	S. adj.	"	1,909	1,898	1,615	1,861	2,094	2,238	2,124	2,188	2,309	5.5	13.9
	Trend r	"	1,837	1,830	1,857	1,917	2,003	2,095	2,175	2,241	2,300	2.6	16.8
M9. Man-made fibre woven fabric	Orig.	'000 sq m	16,074	16,070	14,435	15,945	17,325	16,825	r 17,362	r 18,601	16,144	13.2	1.0
	S. adj.	"	15,568	14,740	15,127	15,340	15,798	16,035	r 16,437	r 17,350	15,725	9.4	3.1
	Trend r	"	15,409	15,340	15,344	15,483	15,739	16,061	16,324	16,505	16,588	0.5	8.1
M10. Cotton Woven fabric(f)	Orig.	"	4,180	4,797	3,862	4,414	4,874	4,157	4,534	r 4,600	4,023	12.5	2.5
	S. adj.	"	4,138	4,465	3,688	4,265	4,413	3,497	4,293	r 4,045	3,702	8.5	2.5
	Trend r	"	4,189	4,178	4,144	4,106	4,076	4,037	3,993	3,942	3,920	0.6	2.6
M11. Cotton yarn(f)	Orig.	tonnes	2,550	3,081	2,422	2,612	3,201	2,736	2,818	1,000	2,571	14.3	3.8
	S. adj.	"	2,698	2,869	2,547	2,594	2,699	2,568	2,520	2,648	2,426	8.4	8.8
	Trend r	"	2,712	2,724	2,698	2,655	2,616	2,589	2,564	2,538	2,527	0.4	6.2
M12. Wool yarn(f)	Orig.	"	1,830	1,894	1,954	2,141	2,040	2,011	2,197	r 2,162	2,228	3.1	37.8
	S. adj.	"	1,856	1,750	2,309	1,984	1,908	1,948	1,893	r 1,975	2,129	7.8	40.8
	Trend r	"	1,873	1,954	1,994	1,995	1,981	1,971	1,971	1,984	1,985	0.0	26.3
M13. Wool woven fabric(f)	Orig.	'000 sq m	725	832	636	735	629	636	885	r 665	785	18.2	30.7
	S. adj.	"	665	719	725	716	623	634	774	r 639	788	23.3	36.8
	Trend r	"	665	686	695	691	685	685	693	706	722	2.2	17.1
M14. Textile floor coverings	Orig.	"	4,059	4,064	3,822	4,366	4,046	4,001	4,137	r 4,215	4,494	6.6	18.7
	S. adj.	"	4,167	3,836	4,255	4,075	3,963	4,048	3,626	r 3,738	4,229	13.1	19.6
	Trend r	"	3,992	4,066	4,080	4,043	3,981	3,928	3,899	3,895	3,890	-0.1	7.7
M15. Unlaminated particle board(g)	Orig.	'000 cu m	57	67	64	70	73	66	78	79	72	8.5	5.8
	S. adj.	"	60	53	71	68	69	68	69	71	67	6.1	6.4
	Trend r	"	61	62	64	66	68	69	69	70	69	1.1	11.5

For footnotes see end of tables

PRODUCTION STATISTICS, AUSTRALIA, OCTOBER 1994, PRELIMINARY

No. Item	Series	Unit	1994									Percentage changes between latest month shown and-	
			Feb.	Mar.	Apr.	May	June	July	Aug.	Sept.	Oct.	prev. month	same month prev. year
M16. Automotive gasoline(h)	Orig.	megalitres	1,425	1,572	1,358	1,591	1,338	1,589	1,620	n.y.a.	n.y.a.	2.0	1.3
	S. adj.	"	1,512	1,548	1,432	1,553	1,334	1,526	1,630	n.y.a.	n.y.a.	6.8	1.2
	Trend r	"	1,488	1,488	1,484	1,483	1,491	1,506	1,525	n.y.a.	n.y.a.	1.3	2.1
M17. Fuel oil(h)	Orig.	"	152	175	192	175	198	196	187	n.y.a.	n.y.a.	-4.6	-5.6
	S. adj.	"	n.a.	n.a.	n.a.	n.a.	n.a.	n.a.	n.a.	n.a.	n.a.	n.a.	n.a.
	Trend r	"	173	179	185	189	191	191	189	n.y.a.	n.y.a.	-1.0	-5.0
M18. Aviation turbine fuel(h)	Orig.	"	329	362	348	353	342	334	378	n.y.a.	n.y.a.	13.2	-0.3
	S. adj.	"	344	374	403	350	372	339	399	n.y.a.	n.y.a.	17.7	3.4
	Trend r	"	356	362	366	369	370	372	372	n.y.a.	n.y.a.	0.0	1.6
M19. Plastics in primary forms(i)	Orig.	'000 tonnes	96.2	106.0	100.9	86.9	100.3	105.4	113.7	r 103.6	109.5	5.7	9.6
	S. adj.	"	102.0	100.9	105.5	86.7	103.2	104.9	102.4	r 101.8	99.7	-2.0	6.7
	Trend r	"	98.8	101.2	102.9	103.6	103.5	103.0	102.5	101.9	101.1	-0.8	9.3
M20. Portland cement	Orig.	"	497	564	515	625	592	659	661	642	614	-4.3	3.4
	S. adj.	"	538	544	541	581	567	641	625	645	572	-11.3	3.7
	Trend r	"	552	551	558	573	591	607	616	621	621	0.1	13.0
M21. Clay bricks	Orig.	million	150.3	172.6	143.8	166.9	161.1	155.5	174.9	r 163.0	159.1	-2.4	7.9
	S. adj.	"	157.7	150.3	150.9	150.9	154.7	155.4	155.6	r 156.6	157.8	0.8	8.1
	Trend r	"	152.0	152.4	152.6	152.8	153.5	154.6	155.7	156.8	157.6	0.5	5.7
M22. Basic iron, spiegeleisen and sponge iron	Orig.	'000 tonnes	556	607	628	652	646	643	649	643	644	0.2	5.1
	S. adj.	"	624	634	649	696	696	609	613	614	602	-2.0	5.0
	Trend r	"	618	641	658	663	657	643	628	614	601	-2.1	7.5
M23. Blooms and Slabs(j)	Orig.	"	590	647	667	681	658	661	680	681	697	2.3	6.6
	S. adj.	"	658	691	705	738	704	611	618	645	671	4.0	10.6
	Trend r	"	665	686	697	694	680	663	649	640	635	-0.8	7.1
M24. Cars and station wagons	Orig.	number	26,012	29,548	21,375	28,792	26,159	25,221	29,115	30,391	29,057	-4.4	18.2
	S. adj.	"	26,396	25,458	25,630	25,235	23,846	23,510	24,982	27,759	27,254	-1.8	17.8
	Trend r	"	26,133	25,830	25,258	24,770	24,654	24,911	25,413	26,035	26,655	2.4	8.8
M25. Vehicles for goods and materials(k)	Orig.	"	1,857	2,358	1,949	2,401	2,074	2,119	2,385	r 2,461	2,451	-0.4	10.3
	S. adj.	"	1,927	2,070	2,251	2,132	1,800	2,049	2,001	r 2,330	2,015	13.5	9.6
	Trend r	"	2,026	2,041	2,048	2,054	2,053	2,052	2,063	2,081	2,096	0.7	14.8
M26. Refrigerators, domestic	Orig.	'000	41.6	49.4	34.4	38.9	38.1	31.2	30.8	32.8	36.5	11.3	5.8
	S. adj.	"	40.6	43.2	40.7	38.0	42.9	36.1	28.1	34.1	34.3	0.4	-7.0
	Trend r	"	40.3	41.0	41.0	39.8	38.0	36.1	34.4	33.1	32.2	2.5	12.8
M27. Clothes washing machines, domestic	Orig.	"	26.4	29.4	24.0	25.2	29.4	30.2	30.0	30.4	26.3	-13.6	-11.4
	S. adj.	"	26.8	25.2	26.0	25.3	28.6	27.9	24.0	27.1	26.7	-1.7	-7.9
	Trend r	"	26.2	26.0	26.2	26.4	26.6	26.6	26.6	26.6	26.5	-0.3	-6.3
M28. Electric motors	Orig.	"	256	279	255	265	289	271	277	302	267	11.4	6.0
	S. adj.	"	257	241	273	269	289	276	269	253	259	2.2	12.7
	Trend r	"	255	261	267	272	274	273	270	265	260	-2.1	15.2
M29. Electricity	Orig.	mil k Wh	12,517	13,489	12,509	13,785	13,921	14,603	14,749	13,553	13,505	0.4	0.3
	S. adj.	"	13,559	13,487	13,279	13,510	13,163	13,447	13,595	13,603	13,727	0.9	0.6
	Trend r	"	13,593	13,481	13,393	13,363	13,387	13,445	13,517	13,591	13,664	0.5	0.5
M30. Gas(l)	Orig.	terrajoules	40,478	47,002	46,223	55,116	57,719	62,250	r 63,896	57,784	51,370	11.1	7.0
	S. adj.	"	50,266	52,673	50,991	50,669	48,074	51,207	r 50,883	53,306	52,063	-2.3	7.4
	Trend r	"	51,353	51,092	50,727	50,472	50,483	50,740	51,181	51,671	52,243	1.1	8.2

For footnotes see end of tables

PRODUCTION STATISTICS, AUSTRALIA, JUNE QUARTER 1994, PRELIMINARY

No. Item	Series	Unit	1992				1993				1994				Percentage changes between latest quarter shown and-	
			June	Sept.	Dec.	Mar.	June	Sept.	Dec.	Mar.	June	prev. quarter	same quarter prev. year			
Q1. Undressed sawn Timber(m)(n)	Orig.	'000 cu m	779	795	766	709	831	r 856	r 850	r 830	928	11.8	11.7			
	S. adj.	"	753	771	754	772	803	r 829	r 838	r 902	897	-0.6	11.7			
	Trend r	"	759	761	763	777	797	826	855	882	902	2.2	13.1			
Q2. Alumina(m)	Orig.	'000 tonnes	2,907	2,948	3,054	3,094	3,125	3,225	3,154	3,172	3,209	1.2	2.7			
	S. adj.	"	2,935	2,908	3,025	3,137	3,153	3,183	3,124	3,216	3,237	0.7	2.7			
	Trend r	"	2,914	2,946	3,023	3,111	3,159	3,162	3,170	3,196	3,226	0.9	2.1			
Q3. Zinc(m)(o)	Orig.	"	88	87	82	76	88	73	79	82	81	-1.2	-8.0			
	S. adj.	"	n.a.	n.a.	n.a.	n.a.	n.a.	n.a.	n.a.	n.a.	n.a.	n.a.	n.a.			
	Trend r	"	84	85	84	81	79	79	79	80	81	0.6	2.5			
Q4. Silver(m)	Orig.	tonnes	122	95	87	80	93	88	95	r 91	104	14.3	11.8			
	S. adj.	"	104	96	82	103	79	89	89	r 118	89	-24.3	11.9			
	Trend r	"	95	95	93	89	87	89	96	101	100	-1.0	15.6			
Q5. Copper(m)(o)	Orig.	'000 tonnes	71	84	82	71	75	84	79	79	87	10.1	16.0			
	S. adj.	"	73	79	78	77	78	79	76	85	90	5.8	16.1			
	Trend r	"	75	77	78	78	77	77	80	84	88	5.7	14.7			
Q6. Lead(m)(p)	Orig.	"	64	59	56	47	62	51	61	57	53	-7.0	-14.5			
	S. adj.	"	58	55	54	60	56	48	59	72	48	33.3	14.5			
	Trend r	"	56	56	57	56	54	55	59	61	59	-3.2	9.1			
Q7. Tin(m)(o)	Orig.	tonnes	67	75	37	73	73	13	63	18	92	411.1	26.0			
	S. adj.	"	n.a.	n.a.	n.a.	n.a.	n.a.	n.a.	n.a.	n.a.	n.a.	n.a.	n.a.			
	Trend r	"	66	59	63	61	56	44	39	50	61	22.0	9.1			
Q8. Gold(m)(q)	Orig.	kg	72,363	75,608	69,505	69,676	73,399	77,826	73,549	75,027	78,696	4.9	7.2			
	S. adj.	"	n.a.	n.a.	n.a.	n.a.	n.a.	n.a.	n.a.	n.a.	n.a.	n.a.	n.a.			
	Trend r	"	73,477	72,573	71,285	71,329	72,925	74,814	75,662	76,209	76,884	0.9	5.4			

(a) Includes beef, veal, mutton, lamb, pigmeat and buffalo meat produced in the Northern Territory. (b) Chicken meat is shown in dressed weight of whole birds pieces and giblets. (c) Source: Australian Dairy Corporation. (d) Includes ale and stout. Excludes beverages with alcohol content of less than 1.15 per cent. (e) Source: Australian Tobacco Marketing Committee. (f) Includes mixtures predominantly of the fibre named. (g) Particle boards and similar boards of wood or other ligneous material. Includes boards for subsequent conversion to other purposes. Excludes laminated. Seasonally adjusted estimates will not be published until a longer time span of data are available to provide more reliable seasonal factors. (h) Produced by Australian refineries from imported and indigenous petroleum. Source: ABARE. (i) Includes liquid, paste, powder, granules, flakes, blocks, irregular shapes, lumps and similar forms. Seasonally adjusted estimates will not be published until a longer time span of data are available to provide more reliable seasonal factors. (j) From continuous casting. (k) Includes utilities, panel vans and prime movers for semi-trailers. (l) Available for issue through mains. Includes natural gas. (m) Source: ABARE. (n) Expressed in terms of green off saw volumes. (o) Primary origin only. (p) includes lead content of lead from primary sources. (q) From primary and secondary sources.

SENSITIVITY ANALYSIS

Where seasonally adjusted series are known to be highly erratic, an analysis of how sensitive the current trend estimates are to additional data can be useful. Such analysis is referred to as 'sensitivity analysis'.

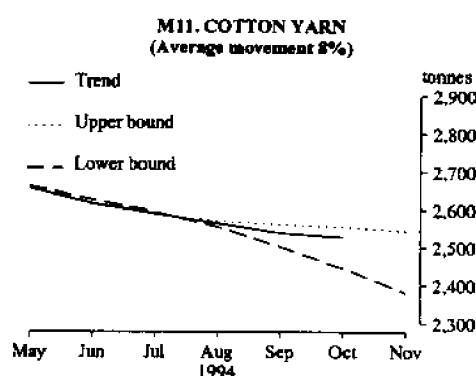
Readers should exercise care when interpreting the latest month's trend estimates because they will be revised when the next month's seasonally adjusted estimates become available. For further information, see Explanatory Notes 7 and 8.

The graph below presents the effect of two possible scenarios on the current and previous trend estimates:

Upper bound The November seasonally adjusted estimate of the production of cotton yarn, is higher than the October seasonally adjusted estimate by 8%.

Lower bound The November seasonally adjusted estimate of the production of cotton yarn, is lower than the October seasonally adjusted estimate by 8%.

The percentage change of 8% was chosen because the average absolute percentage change for this series since January 1965 has been 8%.



EXPLANATORY NOTES

Introduction

1. This publication presents preliminary monthly and quarterly estimates for selected major indicators of production for Australia. A more extensive range of commodities are collected and available on request.

Scope and coverage

2. Production statistics are not collected from single establishment manufacturing enterprises with fewer than four persons employed or from establishments predominantly engaged in non-manufacturing activities but which may carry out in a minor way some manufacturing. However, in general the contribution of these small producers to statistical aggregates is only marginal and data contained in this publication provide reliable information for the evaluation of movements in commodity production.

Comparability with other estimates

3. The ABS publishes quarterly estimates of constant price manufacturing production in the publication *Quarterly Indexes of Industrial Production, Australia* (8125.0). These estimates are shown as index numbers and are derived mainly from estimates of manufacturers' sales and stocks.

4. The production statistics collected monthly and quarterly referred to in paragraph 1 account, in total, for less than half of the output of the manufacturing sector, so differences may occur between the general tendency (if there is one) in these items and changes in the quarterly indexes of industrial production. The comment is even more applicable to the preliminary estimates for the major indicators of production shown in this publication.

Seasonally adjusted and trend estimates

5. Seasonally adjusted statistics are shown for all the data items contained in this publication. In the seasonal adjustment, account has been taken not only of normal seasonal factors, but also where appropriate, of 'working day' effects (arising from the varying numbers of Sundays, Mondays, Tuesdays, etc. in the month) and the influence of Easter and Australia Day which may, in successive years, affect figures for different months. Details of the methods used in seasonally adjusting these series are available on request.

6. Seasonal adjustment procedures do not aim to remove the irregular or non-seasonal influences which may be present in any particular month, such as the effect of strikes, holiday shutdowns or other factors which vary with the prevailing demand for products. Irregular influences that are highly volatile can make it difficult to interpret the movement of the series even after seasonal adjustment.

7. The smoothing of seasonally adjusted series to create trend estimates is a means of reducing the impact of the irregular component of the series. The trend estimates have been derived by applying a 13-term Henderson weighted moving average to the seasonally adjusted series.

8. While this smoothing technique enables estimates of trend to be produced for the latest month, it does result in revisions to the estimates for the most recent months as data for subsequent months become available. Generally subsequent revisions become smaller and after 3 months have little impact on the series. There will also be revisions as a result of revisions to the original estimates and annual reviews of seasonal and 'working day' factors.

9. Users may wish to refer to the ABS Information Papers *A Guide to Smoothing Time Series - Estimates of 'Trend'* (1316.0) and *Time Series Decomposition - An Overview* (1317.0) for more detailed information on smoothing of seasonally adjusted time series data.

Related publications

10. Other ABS publications which may be of interest are:

Manufacturing Production, Australia, Household Appliances and Electrical Equipment (8357.0) - final issue June - August 1994

Manufacturing Production, Australia, Clothing and Footwear (8358.0) - final issue July - September 1994

Manufacturing Production, Australia, Food, Drink, Tobacco, Stock and Poultry Food (8359.0) - issued quarterly

Manufacturing Production, Australia, Fibres, Yarns, Fabrics, Bedding and Floor Coverings (8360.0) - issued quarterly

Manufacturing Production, Australia, Building Materials and Fittings (8361.0) - final issue June - August 1994

Manufacturing Production, Australia, Plastics, Rubber, Paints, Detergents and Industrial Chemicals (8362.0) - final issue June - August 1994

Manufacturing Production, Australia, Transport Equipment (8363.0) - final issue July - September 1994

Manufacturing Production, Australia, Metal Products (8367.0) - final issue June - August 1994

Manufacturing Production, Australia, Energy Products (8368.0) - issued quarterly

Manufacturing Production, Australia, Wood and Wood Products (8369.0) - final issue July - September 1994

Manufacturing Production, Australia: Principal Commodities Produced, 1989-90 (8365.0)

Unpublished production data is also available from the ABS Sydney office. Please contact Frank Orton on (02) 268 4245.

11. Current publications produced by the ABS are listed in the *Catalogue of Publications and Products, Australia* (1101.0). The ABS also issues, on Tuesdays and Fridays, a *Publications Advice* (1105.0) which lists publications to be released in the next few days. The Catalogue and Publications Advice are available from any ABS office.

Symbols and other usages

n.y.a.	not yet available
r	figure or series revised since previous issue
n.a.	not available
n.p.	not publishable



For more information ...

The ABS publishes a wide range of statistics and other information on Australia's economic and social conditions. Details of what is available in various publications and other products can be found in the *ABS Catalogue of Publications and Products* available at all ABS Offices (see below for contact details).

Information Consultancy Service

Information tailored to special needs of clients can be obtained from the Information Consultancy Service available at ABS Offices (see Information Inquiries below for contact details).

National Dial-a-Statistic Line

0055 86 400

(Steadycorn P/L, premium rate 25c/21.4 secs.)

This number gives 24-hour access, 365 days a year for a range of statistics.

Electronic Data Services

A large range of data is available via on-line services, diskette, magnetic tape, tape cartridge and CD ROM. For more details about our electronic data services, contact any ABS Office (see below).

Bookshops and Subscriptions

There are over 400 titles of various publications available from ABS bookshops in all ABS Offices (see below Bookshop Sales for contact details). The ABS also provides a subscription service through which nominated publications are provided by mail on a regular basis at no additional cost (telephone Publications Subscription Service toll free on 008 02 0608 Australia wide).

Sales and Inquiries

Regional Offices	Information Inquiries	Bookshop Sales
SYDNEY (02)	268 4611	268 4620
MELBOURNE (03)	615 7000	615 7829
BRISBANE (07)	222 6351	222 6350
PERTH (09)	360 5140	360 5307
ADELAIDE (08)	237 7100	237 7582
HOBART (002)	20 5800	20 5800
CANBERRA (06)	207 0326	207 0326
DARWIN (089)	43 2111	43 2111
National Office		
ACT (06)	252 6007	008 020 608

ABS Email Addresses

Keylink	STAT.INFO/ABS
X.400	(C:AU,A:TELMEMO,O:ABS,SN:INFO,FN:STAT)
Internet	STAT.INFO@ABS. TELEMEMO.AU



Information Services, ABS, PO Box 10, Belconnen ACT 2616



2830100010948
ISSN 1035-9311